

12600 BUILDING

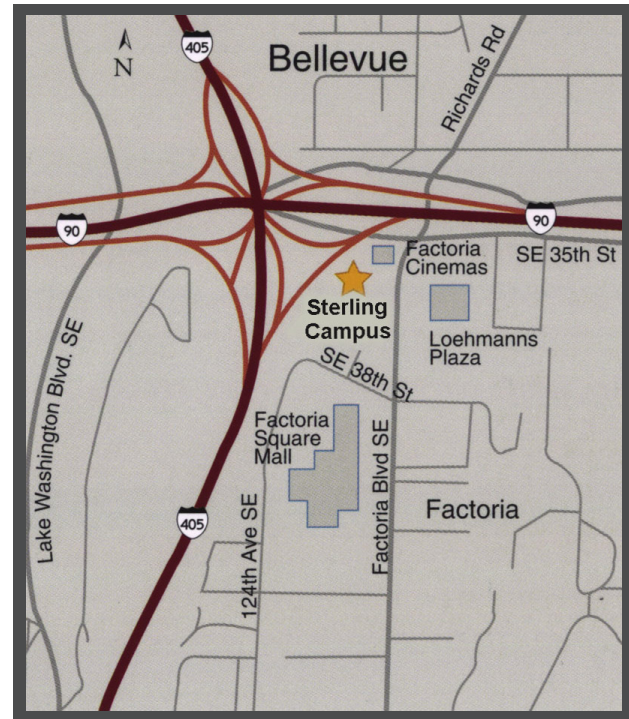
12600 SE 38th Street | Bellevue, Washington

OFFICE SPACE AVAILABLE

Suite 200 // 891 RSF // Available 12/1/18

PROPERTY FEATURES

- Bellevue's Sterling Campus provides over 278,000 RSF of some of the area's finest Class 'A' office space
- Excellent visibility and accessibility to I-90 and I-405
- Abundant free parking (4+ stalls per 1,000 SF)
- Unmatched retail amenities nearby – walk to lunch
- Shower and changing facilities in building
- Flexible lease terms available
- Lease Rate: \$35.00/RSF, Fully Serviced



10500 NE 8th Street, Suite 900
Bellevue, Washington 98004
o: (425) 646-3444
f: (425) 646-3443

broderickgroup.com

For further information, please contact:

GRANT YERKE
(425) 646-5264
yerke@broderickgroup.com

JOHN COOMBS
(425) 274-4284
coombs@broderickgroup.com

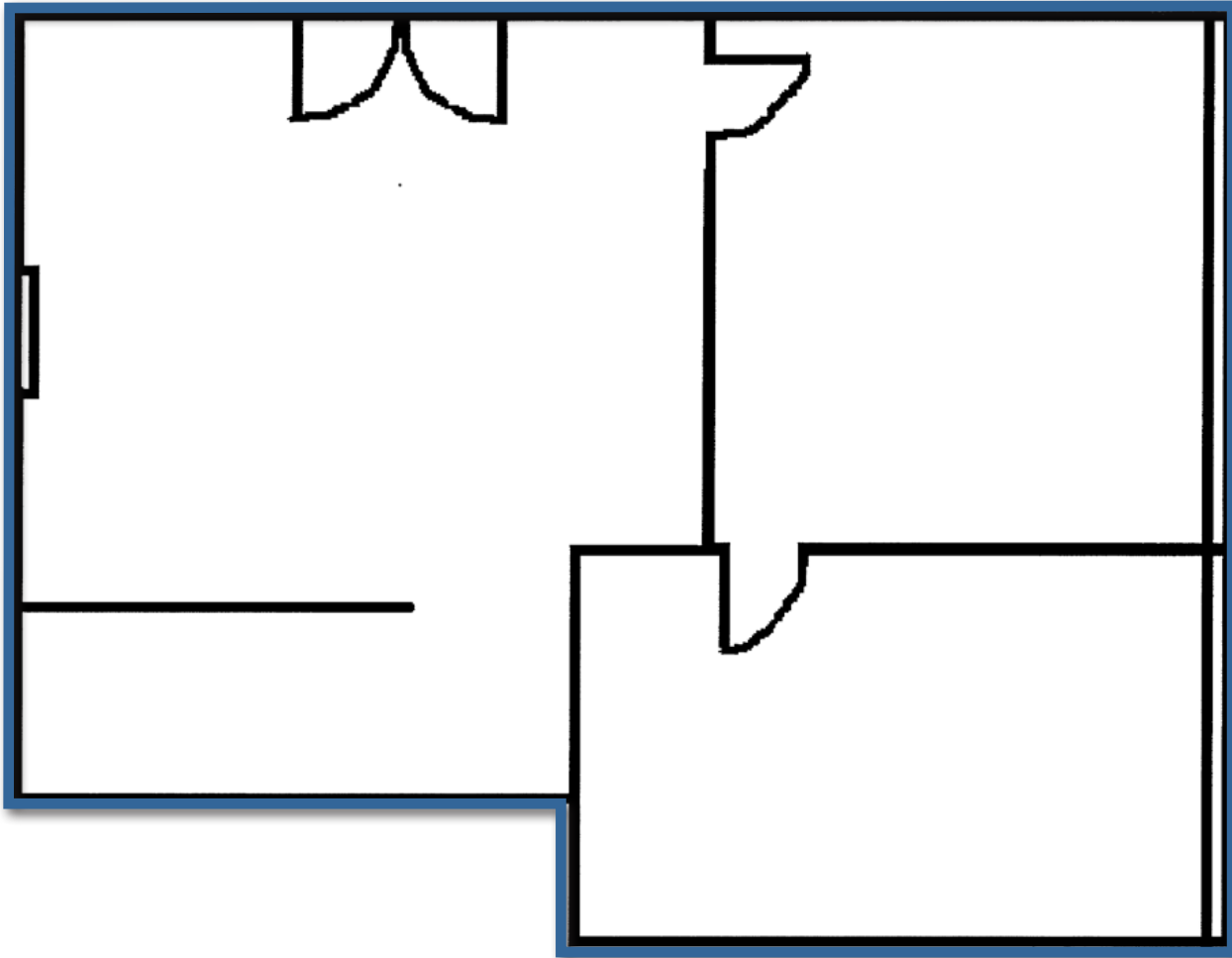
The information contained herein has been given to us by the owner or sources that we deem reliable. We have no reason to doubt its accuracy, but we do not guarantee it. Prospective tenants should carefully verify all information contained herein.

12600 BUILDING

12600 SE 38th Street | Bellevue, Washington

SECOND FLOOR

- Suite 200 - 891 RSF
- Available 12/1/18



For further information, please contact:



GRANT YERKE
(425) 646-5264
yerke@broderickgroup.com

JOHN COOMBS
(425) 274-4284
coombs@broderickgroup.com

